



EXCEL CoolCoat

We Keep You Seriously Cool!!!



SOLE AGENT IN BANGLADESH



ECO TECH BANGLADESH

Let's Make Bangladesh Green

EXCEL CoolCoat®

REFLECTIVE + NANO INSULATIVE TECHNOLOGY

Double action prevents the roof from getting heated up even in harsh and dusty conditions. Resulting in cooler interiors even during peak summer.

MICRO FIBRE REINFORCED WATER PROOFING

Provides effective water proofing property along with excellent crack resistance.

WATER BASED, ECO-FRIENDLY GREEN CERTIFIED

Contains no solvents, very high SRI, ultra low VOC, GREEN manufacturing process, GRIHA Certified.



ADVANCED NANO UV PROTECTION

Prevents degradation of the coating due to UV rays, resulting in long service life & excellent weatherability.

REDUCED ENERGY COST UP TO 40%

Prevents the building from getting heated up thus resulting in reduces cooling load up to 40%.

LOW COST APPLICATION & MAINTENANCE

Low cost- No Recurring maintenance- dust proof - water proof - fungus & mold resistant. Roof looks bright & new with all these advantages.

EXCEL CoolCoat® is a high SRI, Green certified, Nano-technology based Cool Roof Coating. Applying **EXCEL CoolCoat®** on the exterior of the roof, reflects 90% of the IR rays back to the atmosphere. Due to the continuous rejection of sun's heat, the roof surface itself does not get hot. Thus the air below the coated roof never gets hot, keeping the rooms cool & comfortable even during peak summer. Superior double action technology delivers consistent performance & long term protection for buildings.

PRODUCTION DESCRIPTION

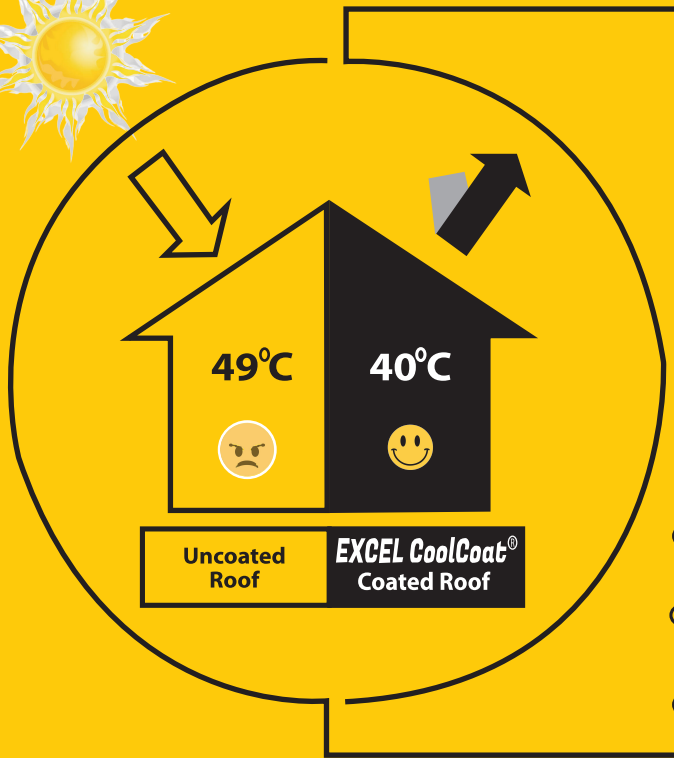
EXCEL CoolCoat® is a water based, high solids, 100% pure acrylic coating. **EXCEL CoolCoat®** contains both reflection and nano insulation pigments for best in class heat protection. Along with it, the adhesion enhancer & Nano UV protectors prevent the coating from UV degradation delivering excellent weatherability and longer service life. **EXCEL CoolCoat®** is powered with micro-fibres for excellent water proofing & crack resistance.

Can be applied on any types of surface like RCC (flat/slope), Tiled, Metal sheet, Asbestos sheet, colour coated metal sheet, Side walls etc.,



PROPERTIES :

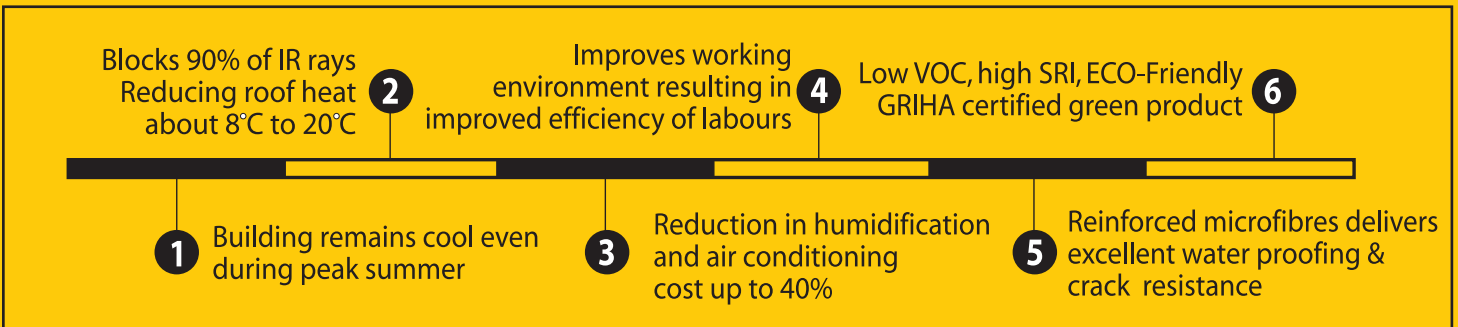
Ultraviolet Resistant	Nano UV protectors provide excellent UV protection & longer service life.
Reduced Energy Costs	The reflection & insulation technology provides excellent thermal barrier. Up to 40% power saving can be noted in humidification and air-conditioning areas.
Long-term Performance	The UV cross-linking polymer and UV protectors provide an excellent tough & durable protective membrane.
Water-Based	Contains no solvents, cleans up with water. No toxic substance incorporated.
Low Cost Application & Maintenance	Low cost- easy application-dust proof- water proof- fungus & mold resistant. No recurring maintenance cost. Roof gets cleaned automatically in rain.
Stable Color	The acrylic resins cross-link under UV exposure to lock in colour and lock out dirt.
High Film Build	High volume solids allow fast application to uniformly cover textured substrates.



- Reflects 90% of IR rays
- Double action: Reflective + Insulative
- Does not allow the roof to get hot
Reduce Roof Heat up to 20°C
- Since no heat enters the building,
the temperature of the room does not
raise above ambient.
- Keeps the room cooler even during
peak summer.
- Reduce air-conditioning cost up to 40%.

- Uncoated roof absorbs heat and
transmits it into the building.
- Internal room temperature increases
due to transfer of heat from the roof.
- Results in thermal discomfort, increased
cooling cost, releases green house gases,
increase urban heat island.

ADVANTAGES



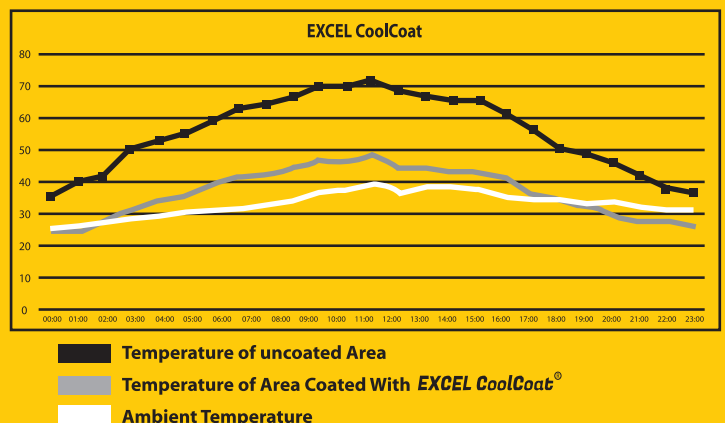
REDUCED ENERGY COSTS

Comparative thermal performance of EXCEL CoolCoat® on roofing materials

Ambient Temperature : 40°C

Roof Coated with EXCEL CoolCoat® : 48°C

Uncoated roof temperature: 70°C



This result proves the continuous rejection of solar heat, preventing the roof from getting heated up.

EXCEL CoolCoat® coated roof remains cool by effectively reflecting the sun's heat, unlike regular roofs that absorb and retain heat and are subject to UV degradation. Roof temperature can be reduced in excess of 20°C. Complies with Energy Star, Cool Roof Rating Council & Eco labeling guidelines.

5 to 7 Years

DURABILITY

TECHNICAL DETAILS

SOLAR REFLECTIVE INDEX	122 (Tested by NABL certified lab)	PERMEANCE	3.2 Perms 17 mils
SOLIDS BY WEIGHT	65% (+2+1-2)	PERMEABILITY	0.05 Per Inch
SOLIDS BY VOLUME	50% (+2+1-2)	RADIATION VALUE	Infrared: 90%, Ultraviolet: 85%
THERMAL EMMITANCE	0.82 (ASTM 1371)	CRACK BRIDGING	Bridges gap upto 1.6mm
SOLAR REFLECTANCE	0.92 (ASTM C1549)	FIRE RESISTANCE	Class A
TENSILE STRENGTH	0.878 Mpa	HEAT REDUCTION	8° C to 20° C
TEMPERATURE LIMITS	18° C to 100° C	COATING THICKNESS	200 microns
ELONGATION	200% (+20) @75° F(24° C)	HARDNESS	70 to 80 Shore A

AREAS OF APPLICATION



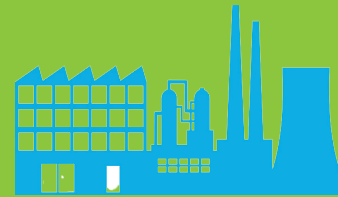
AIR CONDITIONED BULDING



OFFICE BUILDING



GREEN BUILDING



FACTORIES



SINTEX TANKS/
WATER PIPELINES



ANY TYPE OF OLD & NEW SHEET
ROOFING & RCC ROOFS



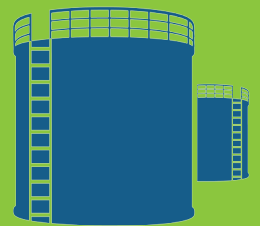
HOUSES



HOSPITALS



WAREHOUSES



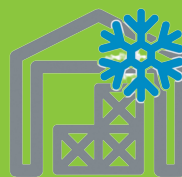
OIL STORAGE TANKS



TERRACE OF COMMERCIAL
BUILDINGS



OUTDOOR CONTAINER CABINS/
PRE-FABRICATED OFFICE



COLD STORAGE



RESIDENTIAL COMPLEXES



SHOPPING MALLS

Manufacturer's : **EXCEL COATINGS**

7/176F-F1, Therkku Thottam, Athipalayam Road
Keeranatham, Saravanampatti, Coimbatore-641035
TamilNadu, India. www.xlcoatings.com

Sole Agent in Bangladesh
ECO TECH BANGLADESH
City Shopping Complex, 2nd Floor(S-17)
Beparipara Circle, Access Road, Agrabad
Chittagong-4100, Bangladesh.

